
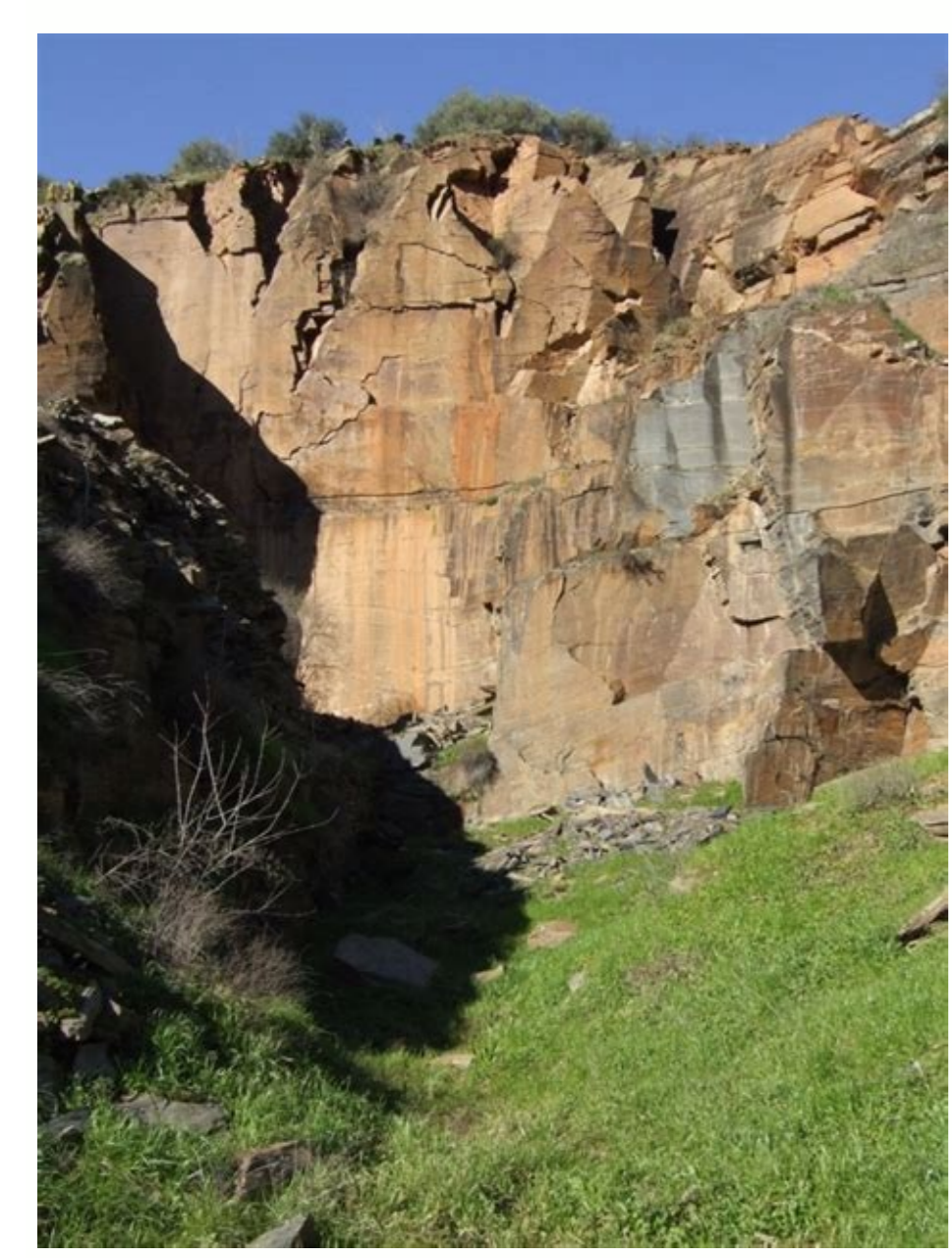
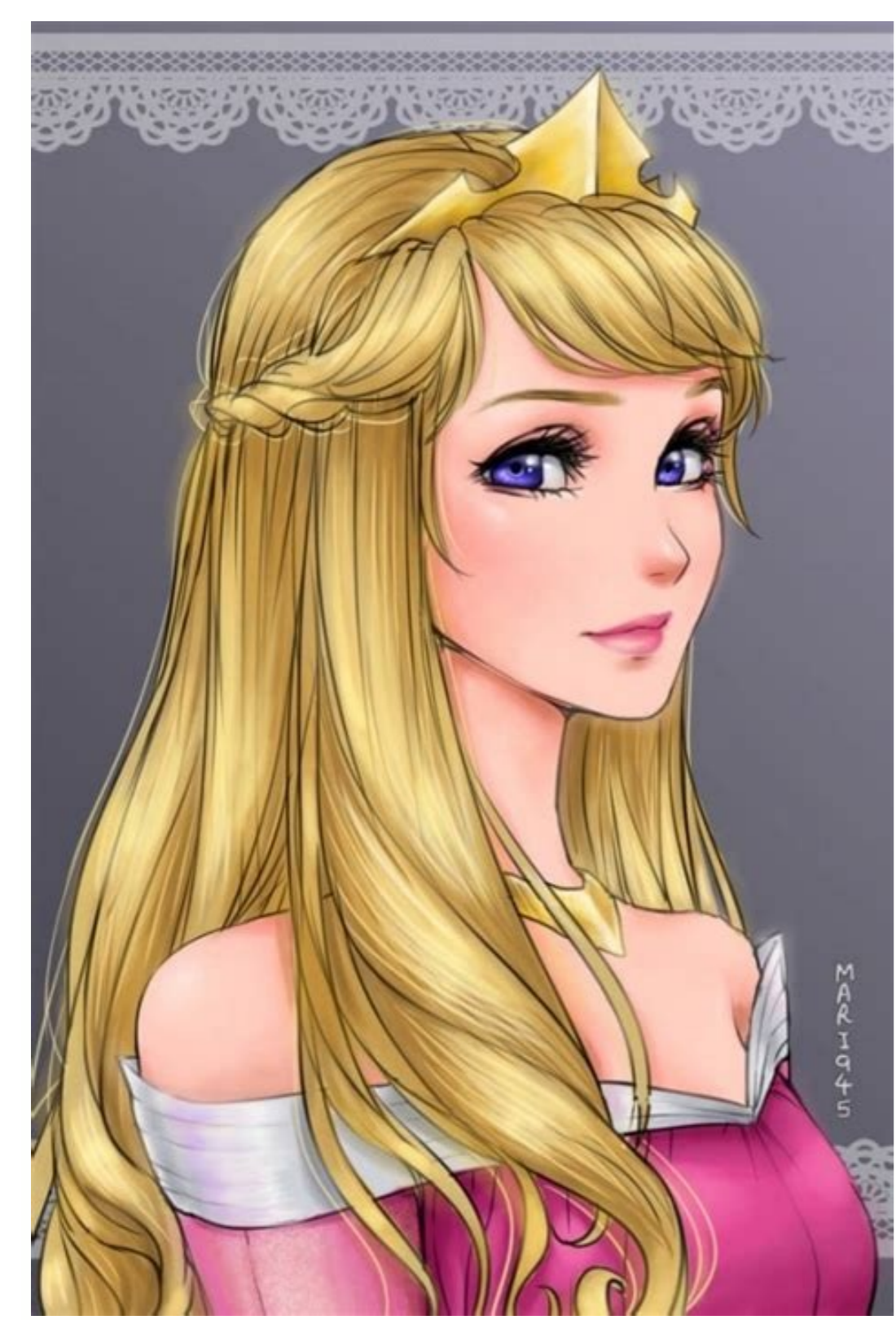


How to draw ariel

 I'm not robot  reCAPTCHA

[Continue](#)





How to draw ariel eyes. How to draw ariel draw so cute. How to draw ariel princess. How to draw ariel as a human. How to draw ariel face. How to draw ariel the mermaid. How to draw ariel cute. How to draw ariel easy step by step.

Watch the videos below and the step-by-step instructions below to learn how to draw Ariel from Disney's The Little Mermaid. Keep listening for more tutorials! Keep listening for more free drawing lessons: All of the free art lessons on EasyDrawingtutorials.com are good drawing tutorials for beginners and experienced artists. Online tutorials are easy to locate; They teach you how to draw basics while showing you how to draw funny cartoon characters step by step. Each cartoon character has video drawing tutorial option and step by step text and is written for you to follow. STIPROT ARIEL STRIPS associated with the tutorial Follow the video below and perfect the video to progress step by step after each step and progress at your own pace. You can find the drawings below easier to follow step by step. The new lines in each stage are shown in red and each step is explained in the text below the photo so you know exactly what to draw in each stage. You might want to open the video in a new tab and use the two drawing methods: Suffer and draw at your own pace. You can watch a new step-by-step tutorial with commented steps below: An old video tutorial: Introduction: Start drawing Nintendo Mario with a pencil sketch. Press too hard at first. Use light and smooth features for sketches. Step 1: To draw this Disney princess, start with an egg facing the center of the page. It is the basic shape of Ariel's head. Add two curved, wavy lines starting at the bottom of this shape and extending to the edges of the paper. These will be the basic shapes of Ariel's neck and shoulders. 2. Next, draw two lines crossing the egg shape, vertically and horizontally. As you draw the lines, bend them to follow the outline of the shape. Draw two small lines between the horizontal construction line and the base of the egg shape. These will be the construction lines to help you place Ariel's facial features later. Step 3: Above the horizontal construction line and either side of the vertical construction line, draw two flat-based circles for Ariel's eyes. For perspective, draw a circle to the left and it should lightly touch the vertical construction line. 4: Draw the basic idea of Ariel's nose by adding a curved line between the main horizontal construction line and the top of the two smaller lines. Below, draw what his mouth looks likep. 1 AB 4 Apply the following movies step by step and drawing instructions to learn to draw Disney Ariel and a small mermaid. Stay tuned to other tutorials! Stay tuned to other free drawing courses: All free art courses on EasyDrawingtutorials.com are good instructions for beginners and intermediate artists. Online tutorials are easily recognizable; They will teach you to draw the basics by showing you how to draw funny cartoon characters step by step. Each cartoon character has the possibility of teaching video, as well as photography step by step and written text that follows. With regard to the tutorial, draw Ariel step by step, follow the video below and stop the video at each step to set your own pace. Drawings below may be easier to follow step by step. In every step, new lines appear in red and each step is explained in the text below the photo, so you know exactly what you should draw at every stage. You can open a video on a new tab and use both ways of drawing! Take time and draw at your own pace. You can look at the new tutorial step by step with the following steps: Below is an older tutorial: Introduction: Start drawing Mario Nintendo Skicou pencil. Do not expect too much in the early stages. Use a light, smooth move for sketches. Step 1: To draw this Disney Princess, start with an egg shape towards the center of the pages. This is the basic shape of Ariel's head. Add two curved wavals starting at the bottom of this shape and spreading to the sides of the paper. These are the basic shapes of Arielina's neck and arms. King 2: Next draw two egg -shaped cuts, one vertical and one horizontal. After drawing the line, bend it to watch the outline of the shape. Draw two smaller lines between the horizontal structure and the bottom of the egg shape. These are design lines that will later help you place Ariel's facial features. Step 3: Draw two wheels with a flat bottom for Ariel at the top of the horizontal construction line and on both sides of the vertical construction line. From the perspective, reduce the circle to the left and wipe the vertical construction line slightly. Step 4: Draw a basic guide for Ariel by adding a curved line between the main construction line and the upper part of two smaller lines. Draw below her lips that look likethe letter d on the side. Step 5. Now turn off the Ariel hair guides. Draw a very long, curved line that starts on the right side of Ariel's head and goes left over her forehead. Continue drawing the line on the left side of Arielina's head, around her head, then along the right side of her face and end up over her right shoulder. The left side of the Ariel's hair is a straight curved line that starts from the bottom of the newly formed hair to the upper part of its left arm. Improve your drawing skills using worksheets that can be printed! Learn to draw a beautiful mermaid Ariel using simple steps and video tutorial instructions. With simple steps you can easily draw a beautiful mermaid Ariel. Go to step by step instructions. The perfect mermaid of Ariel Drawinghan Christian Andersen was a Danish author who wrote extensively in the 19th century. He became famous for his fairy tales. This was certainly the case of many of her stories, including the little mermaid, published in 1837. The name of the title character, Ariel, is the teenage Princess of the Virgin, who dreams of life on land at sea. Download instructions in PDF format. Do you want to draw Ariel? Now, with this simple drawing instructions, you can step by step using a pencil and paper. Follow the drawing instructions below. Note that the accompanying picture for each step is displayed in blue and lines drawn in previous black steps. You can create the form in the following steps. You can also use colored pencils, crayons, colors or markers to shade the finished drawing. If you liked this manual, look at the following drawing instructions: Hello Kitty, Minion and Minnie Mouse. Step by step draw the mermaid Ariel, start with drawing a small circle. This will describe Ariel's face. From a circleCurved line to outline jaw and chin. Draw a series of curved lines crossing the circle. These lines show how Ariel's hair falls over her forehead and ear. Erase the guide lines from Ariel's head. Draw two curved lines from the head to create Ariel's neck and shoulders. Close the shape of Ariel's upper body by drawing an almost circular curved line from shoulder to shoulder. Using the curved lines, place an approximately rectangular shape under the upper body. This forms Ariel's body or stomach. Draw two long curved lines from the belly. Let the lines meet at a sharp point and wrap Ariel's tail. Draw two sets of curved lines from the tail. Each set is at the point where the Ariel fins are located. Draw a curved line above the point where Ariel's tail and stomach are. This adds parts to the tail. Add more information to Ariel. Draw a short curved line under the neck to define the collarbone. Draw an apostrophe on the stomach, a point with a short curved line to form the navel, and draw curved lines on the back above the tail. Finally, draw long curved lines along each fin. Expand a set of curved lines from each hand to outline the hands. Add another set of curved lines to each hand, tilting them to show the bend at the elbow. Draw Ariel's hands using the connected curved lines. Each finger can be drawn with an extended U-shaped line. Draw a curve through the palm and add details. Draw Ariel's outfit in the form of a sink by drawing several overlapping frozen shapes on the upper body in two sets. Use two short curved lines to draw the strip. Wipe down the upper body guides. Draw Ariel's hair with long and short curved lines. Let the lines intersect around her face. At the end of the hair, let the line connect to the points. Close Ariel's eyes with curved lines. Draw her nose and armored lines. Express short curved lines above the eyes to define the eyelashes. Draw four curved lines around the mouth and mouth. Draw two curved lines in each eye to create a pupil and a rainbow shell. Draw a small circle inside the student and shake the student. Ariel Color: He is traditionally depicted with red hair and a green tail. Easy Step - A step by step guide to draw Ariel the mermaid here to keep the lesson on Pinterest! Still seeing the ad, can you download the PDF? First, check that you are included in the system. You can connect with herAccess page. If you still cannot upload a PDF file, a probable solution will be reloaded. You can do this by clicking on the Browser button. This is a round icon, filed with an arrow in the upper part of the browser window. Usually it is located in the upper left side (you can also use the key combinations: Ctrl+R on PC and CMD+R to Mac). Today we will learn how to draw Ariel from La Sirenetta Della Disney. Ariel is one of the most famous princesses Disney, and the mermaid remains classic! So prepare the pens and learn to draw Ariel step by step! Step 1 to start Ariel, we first need to draw a circle, which will be the basis of her head. Below this circle, draw another small triangular shape that will determine its lower jaw. Step 2. Draw a small neck that goes below the chin line, and two lines coming from her neck to give Ariel her shoulders. Wipe the lines between the circle and the triangle that you drew in the last step so that Ariel had a hard head. Step 3 under the two lines that you drew in the previous step, draw Ariel her branded bikini from shells and two lines that pass below to form her bust. Step 4 Lightly extend Ariel's hands from the body. Each hand should be thin to be denser at the end, where it becomes its wrist. Step 5. In order to maintain the delicacy of Ariel, we are going to connect her hands along with the fingers close enough to each other, as shown in the image on the left. Step 6. Repeat the same process to draw the other hand of Ariel and draw two fins on both sides of her hips. Step 7. The lower part of Ariel's body is nothing more than a tail that you can do by drawing a long curved oval where her legs should be, and two small fins at the end of her tail. Step 8. We will draw Ariel hair, dividing it into two parts. First, he draws a large strand of hair, which is located in front of his head and falls on the left. These hair should cover about a third of the entire length of the Ariel head. Step 9. We are going to finish Ariel's hairstyle, drawing the other half in the form of one hair lying behind her body. Your hair should go to the sides and leak slightly to the right. Adding a large number of Ariel hair waves will retain the effect of swimming in water. Step 10. Draw two very large eyes of Ariel, which should be almost perfectly flat at the bottom. Also, a simple triangle will complement Ariel's nose. Stage 11 at this stage is ArielVery finished. All that's left is to give her a little smiling mouth and some lines flowing along the tail fin. Exactly! I hope you enjoyed learning to draw Ariel with me. If you have, you should check out the rest of our leaders, especially how loyal you are to his loyal companion! See how you draw Ariel video for a little more help, check out this adorable video Draw Sate where you draw the sweetest Ariel I've ever seen! The view!

