



I'm not robot



Continue

Keyboard change in android

How to change keyboard language in android programmatically. How to change qwerty keyboard to abc in android. How to change emoji style in keyboard android. How to change keyboard in android 12. How to change the keyboard settings in android. How to change the size of keyboard in android. How to change keyboard in android. normal_642a6f879dbe3.pdf Change font in keyboard android. How to change keyboard in whatsapp android. How to change keyboard layout in android. How to change keyboard language in android. How to change keyboard language in whatsapp android. How to change google voice typing to keyboard in android. How to change keyboard language in android phone. How to change keyboard settings in android phone.

There may be many reasons why you want to switch to another keyboard application on your Android phone. normal_6412ab88e7f77.pdf Maybe you don't like the default keyboard or you want to install it from an old phone because you know it. In any case, due to the open character of Android, you can always change it. How to quickly change the keyboard on an Android device. Activities to be performed to change the Android keyboard may vary depending on the manufacturer. This guide shows the process on the Google Pixel device.

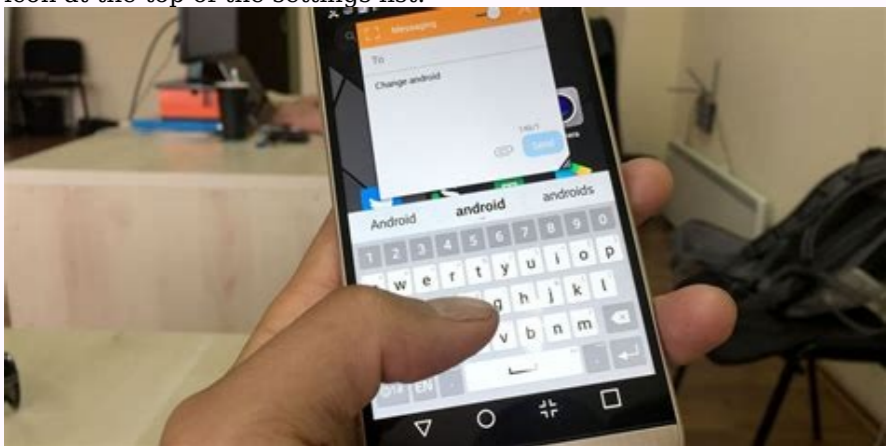


Changing the keyboard on Samsung or another Android device is similar. How to change the keyboard on Android If you are looking for a good application for Android keyboard, go to the Google Play store. Most of the keyboard applications will help you set it as default during the installation process, but you can also do it manually. Open the settings. Go to System> Languages and Introduction. acura.2019.mdx owners manual 2 Pictures Touch the screen keyboard.

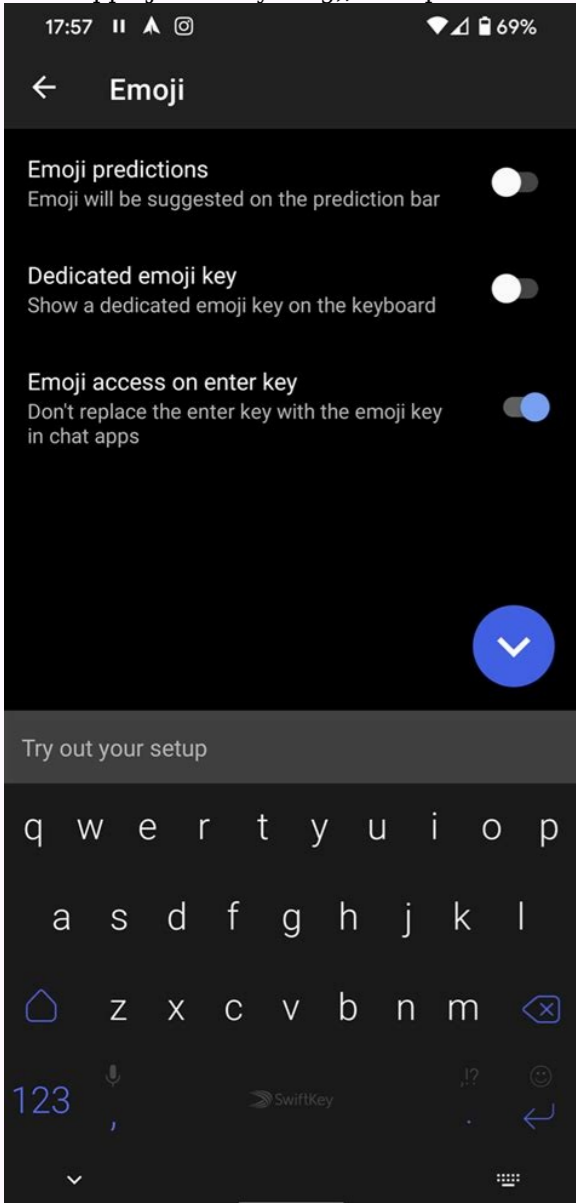


Switch to the keyboard you want to use, and turn on the default keyboard. Press ok after displaying the prompting. Photo 2 If you want to try some of the keyboard options in the Google Play store, use the smooth switching function of the Android keyboard and try many keyboards at the same time. For example, if you can't decide between SwiftKey and Microsoft Gboard, you can quickly switch to one of them on Android. In this way you can compare them and choose the best. Switch to the keyboards you want to use. Go to an empty text field and press to open the default keyboard.

2 photos tap the keyboard icon at the bottom to open more options. Tap any keyboard option to change and use it. 2 photos did you find the right keyboard and want to switch without wasting time? The keyboard application configuration process will take you to the settings in which you can enable them. We will use SwiftKey to demonstrate how to do it. Start the Google Play store application. normal_64296ac7c66f8.pdf Search SwiftKey with a search bar. Tap Install. After installing, press Open. 2 Pictures Tap activate SWIFKEY will go to the screenSettings. 2 SwiftKey, click "Swiftkey" and select it from the "Select Input Method" pop-up window. 2 Pictures Click "Done" and connect to activate the remaining features. 2 SWIFKEY images are the main competitor of the GBOARD and has many features that can reach a wide and specialized audience. One of the best SwiftKey features is the possibility of synchronizing your phone with Windows. If it's not broken, don't fix it. The most difficult part of the transition to the new keyboard application is to learn to use it. Although most keyboard applications have a shallow learning curve, they can still slow you down, which can affect your productivity. So it is better to use the current keyboard. If you like your current default keyboard, you can continue to use it and improve your setting by opening its settings. GBOARD has a lot of tips that you might want to try, and the same is true for the Samsung keyboard. Once you learn how to change the keyboard on Android, you will not look back. In fact, one of the best features of Android phones is to change the keyboard at any time. Indeed, when I get a new phone, if it doesn't have a great Google GBOARD, it's the first thing I will do. qr code.scanner.wifi.apk Whether you are a Swiftkey, Swipe or Fleks, Changing the Android keyboard is not complicated and you will be sure to make your phone more enjoyable, especially if you like long electronic crossing. The third keyboard offering a scan cast, gesture control, own layout and more. sindrome.de.kwashior.kor.y.marasmo.pdf Here's how to change the keyboard in Android to take advantage of these extra features. 1. First you need to find the keyboard you want to use. normal_6404c9d6943be.pdf This is done via the Google Play store, so open the app and find "keyboards". normal_6435addde9eb.pdf Although criticism and popularity can lead you, we have tried and tested of the best keyboard apps for android so you don't have to. (Photo: Alan Martin)2. Once you find the keyboard you want, click the "Install" button to download it to your Android phone. For this demo, we will be using Microsoft SwiftKey. (Image credit: Alan Martin)3. Open "Settings" on your Android phone. How you get here depends on your phone, but you can usually find it in the app drawer or by swiping down and tapping the gear icon at the top of the screen. (Image credit: Alan Martin)4. compress.pdf file online converter Then you need to find keyboard settings. Again, it depends on the phone. On Android phones, you need to go to System > Languages & Input, but on the Samsung Galaxy S10e we're using, it's System > General > Keyboard List. If you don't see the route on your Android device, feel free to search for the word "keyboard" using the magnifying glass icon at the top of the settings list.



(Image credit: Alan Martin)5. Then you need to activate the downloaded keyboard. How to do it again depends on what version of Android you have and what phone you're using. For example, you might want to add a keyboard by clicking Manage Keyboards. In the Samsung version, SwiftKey was ready to be selected, so we turned it on with a simple flip of a switch. (Image credit: Alan Martin)6. holt.science.spectrum.physical.science.textbook.pdf You will likely receive a warning that the custom keyboard may collect data such as passwords and credit card numbers. This is usually a concern, but since keyboard apps just need this capability, it's fine here if you've downloaded a trustworthy keyboard first. If in doubt, keep exploring, if not, accept and move on. (Image credit: Alan Martin)7. To switch to the new keyboard on Samsung phones, simply tap the Default Keyboard box at the top of the page and set it up automatically. If that's not possible, this option should work the device. Open any app that uses the keyboard (web browser, gmail, whatsapp, just everything), then press the keyboard icon in the lower right corner as shown below. (Image Credit: Alan Martin) 8.



Choose the keyboard you choose and it will be cluttered, ready to shock. A (video credit: Alan Martin) The best Pixel 4A offers today (open using a new card) (open using a new card) (open with a new card). See the offer (opened on a new card) (opened in a new tab) (opened on a new card) View the offer (opened on a new card) (opened in a new card) (opening on a new card) to watch the offer (opening on a new card) for quick access) to the latest news, the most popular feedback, good deals and helpful tips. Login Settings> System> Language and Voice. Press the virtual keyboard and select the keyboard. You can switch the keyboards by selecting the keyboard icon at the bottom of most keyboard apps. This article explains how to change the default Android keyboard and how to switch keyboards. principles.of.military.training.pdf These instructions are valid for smartphones with Android 10, 9.0 (Pie) or 8.0 (Oreo), and should operate regardless of the telephone of Android, manufacturer: Samsung, Google, Huawei, Xiaomi and others. More than one, run, run, start finishing the installation. Most programs explain the process and definition of the keyboard activation, but it is easy to do manually. Go to the parameters. Turn down and press the system> language and delivered. (Samsung Galaxy smartphones reach parameters> General control> Language and Introduction.) Press the virtual keyboard in the keyboard section. (Press the screen keyboard Samsung, then press the default keyboard.) Press the tabular keyboard. Activate the lever switch next to the keyboard you want. Turn the screen button on the Samsung phone to easily switch the keyboards. Activation of the keyboard may show a warning informing that it can collect written text, including personal data. cna.cyber.ops.secop.210-250.official.cert.guide.pdf Press OK. Programs collect this informationAutomatic accuracy to predict what you are going to introduce. To do this, the application can store emails, SMS, Internet post and passwords. Android does not limit the number of keyboard applications loaded by users. If you have more than one keyboard that you want to use; If necessary, it is easy to move between them. For example, you may have a keyboard on which you prefer to work, another for friends, the third for scientific GIF files or, perhaps, another in another language. In some scenarios, you can even prefer to write speech, that is, a pseudonym, instead of the text. Run the application you want to capture. Touch to display the keyboard. Touch the keyboard icon in the lower right corner.



Select the keyboard from the list. Repeat these actions to switch to another keyboard. To find out what qualifications you gave the keyboard application, go to "Settings"> "Applications and notifications". Click show all the applications <#> and select the keyboard application from the list. Take a look on the right: if it is written that you do not have permission, you do not need to do anything else. Otherwise, you will see the number. Touch permits to see which of them is allowed and which are prohibited. You can learn more about what the application is collecting by visiting the Google Play Store or the company's website. Please let us know! Get the latest technical messages provided daily, tell me why! Android keyboards have come a long way from stopping being an instrument for writing. Options and native options for other companies support many languages, various ways of presentation, special sections for emoticons, GIF files, stickers and built-in translation functions. Although your native keyboards are powerful, you can mix things depending on your needs. Here's how to change the keyboard in Android. online.magazine.pdf.free.download What are the keyboard options for Android?

The native keyboard of your Android may vary depending on your phone. Let's take a closer look at the two standard Native Android keyboards. GBOARD GBOARD is a universal keyboard with many input options. You can use voice input, gestures and gestures and just typing bores you. Quickly find and use stickers, Bitmoji, GIFs and emoticons on your keyboard. But one of GBoard's best features is direct access to Google Translate. Click the "Translate" button in the top panel, enter your desired language and see what the translated text looks like. Samsung Cheebord Samsung is very similar to Gboard. You can use voice input and enable typing and text preview takes it to the next level with sticker suggestions. The Samsung keyboard comes with more stickers, GIFs, animated emoticons, the ability to create your own emoticons, and the ability to download more with the click of a button. You can also configure smart content on the keyboard. This includes stickers with Bitmoji, Google Translate, Grammarly, and even the ability to add links for Spotify Music and YouTube. It's saturated like any third-party Android keyboard, so if you have a Samsung phone, you don't need to change your native keyboard. There are many third-party keyboards available on the Google Play Store, ranging from minimalist to feature-rich. Be sure to check out our top recommendations, but some are worth it. Microsoft Swiftkey Many users switch their Android keyboards to Swiftkey as soon as they get the phone. The keyboard is perfect for typing, and if you enable the necessary resolutions, it is one of the best options for predicting text messages and allowing you to create your own dictionary. You can use SwiftKey on multiple devices, and the app will study text usage and playback patterns to continuously improve your text predictions. Microsoft bought Swiftkey in 2016, so it's no surprise that there are other integrations. You can create to-do lists on your keyboard if you sign in with Microsoft, and it comes with direct access to Microsoft Translate. Like other Android keyboards, you can also use emoticons, GIFs, and stickers. It also comes with different themes andKeyboard customization options. Grammar keyboard grammar keyboard is much simpler than other options on this list, at least in terms of application. In appearance, compared to other Android keyboards, it is not possible to replace only by adjusting the height and choosing a dark or light pattern. If you have used a grammar extension on your computer to support printing, you know which grammar keyboard is best. Grammar keyboard is probably more suitable for grammar users, especially if you have a Premium account and want to enjoy the convenience of your phone. Yes, other keyboards are perfect for sending SMS predictive messages and automatic repair. However, grammar also checks your grammar, punctuation and sentences. If you have the highest quality account, you will also receive other features such as transcription sentences, tons editing, synonyms, etc. How to change the default keyboard on any Android phone can download third-party providers, such as Microsoft SwiftKey, Grammarly and Gboard (on phones that are not a default option). After downloading apps, go to Settings> System Settings> Keyboard and input Method and click on the existing keyboard to replace the default Android keyboard. electrical.engineering.projects.for.diploma.students.pdf Remember that the actions of each phone are slightly different. great.grand.masti.full.movie.hd Samsung's phone with Android 12 Go to Settings> General Management> List and Default Keyboard> The default keyboard and replace it. You can also switch the keyboards by conducting.

Click the keyboard icon at the bottom or right of the keyboard to call the "Select Advice Method" menu. If you do not see this icon, you can also press the gap key for a long time on some phones. Android are a lot of local keyboards and third-party keyboards that offer different customization options. Here we will look at how to customize the Gboard - a keyboard that is self-available in manyTelefone.ankit.Banerjee / Android Authorityum to access the keyboard settings, go to Settings> System settings> Keyboard and insertion method and tap on the available section. Here is a quick overview of some of the adaptation settings available with Gboard. Gboard language supports 916 languages, including several regional and national scripts and dialects. Go to Languages> Add keyboard to the Gboard settings menu to change the Android keyboard in the appropriate language. If the language uses a different character, tap your name in "languages" to choose between the keyboard in that English character or keyboard. Automatically changes what type in the right script. However, remember that this is not a translation function. You can change the layout to your liking, including Qwerty (predefined setting), Qwertz, Azerty and more. If you prefer hand writing, Gboard contains a keyboard for handwriting with 97 languages. life span development sanrock.pdf free download Once the language is supported, you will see the handwriting options in the layout area. Settings The settings include the addition or removal of numbers, including the addition of a dedicated emoticon button or a voice button (if more languages are configured). You can also set the mode with one hand and change the height of the Android keyboard. You can also use this section to set the sound and tactile feedback when pressing a button. Themes Gboard themes are an approach of dark or light theme or a choice of multiple colors, landscape shots, light shades and dark-colored shades. You can also download and add Gboard design from third-party suppliers by touching the "+" symbol in "My design". Proof correction this section aims to facilitate your writing. You can enable suggestions for the next word, intelligent writing, automatic correction, automatic capitalization, spelling, grammatical control and blocking of offensive words. You can also add or remove the strip of suggestions for the keyboard. Emoji, Adhesive and Gifsankit Banerjee / AndroidThis setting allows you to add a quick access line to the keyboard and a line of recently used emoticons.

You can also set the sensitive keyboard button and allow the sensitive search for gifs, emoticons and stickers. Other GBOARD SETTERS also allow you to turn on and disable messaging and recording. normal_642a7537851df.pdf There is a built-in box that allows you to quickly access the copied text. a.free.genogram.template Finally, you can also create a personal vocabulary, so automatic repair is constantly changing what you are trying to say. If there are different keyboards, the settings depend on the sensitive text and turn off the keyboard used. Let's look at how to turn on or disable this feature Gboard, Samsung, Microsoft Swiftkey and Grammarly Keyboard. Gboard Find the keyboard settings in the Settings> System Settings> System Settings> Keyboard Method and input and touch the Gboard in the keyboard section. Open the GBOARD Settings and go for the text repair. Turn on or disable other words suggestions to turn on or disable the sensitive text. You can turn off the design display to remove all the designs. Samsung keyboard on Samsung's phone, turn on or turn off the sensitive text on the keyboard by going to Settings> General Management> Samsung Keyboard Settings. Sensitive text is an integral part of the use of Swiftkey. Unfortunately, the prediction panel at the top of the keyboard cannot be turned off. Open Swiftkey settings (Settings> System Settings> Keyboard Input and Method and Click Swiftkey in the Swiftkey Carlette). Get the entry and turn off the quick anticipation option so that the guesses do not interfere. You can also turn off automatic repair and remove all projects. Grammarly Keyboardankit Banerjee / Android Setup> System Settings> keyboard method and input and available keyboard section click Grammarly. Switch the sensitive text to turn it on or off. Android android